

# DEMİR LYKIA RESİDENCE

**Features of the complex:** 18 apartments 2 + 1, 24 apartments 1 + 1, 3 villas 4 + 1, 6 storey buildings, Outdoor pool(18\*5m), children's pool, above-ground parking, CCTV cameras, Generator.

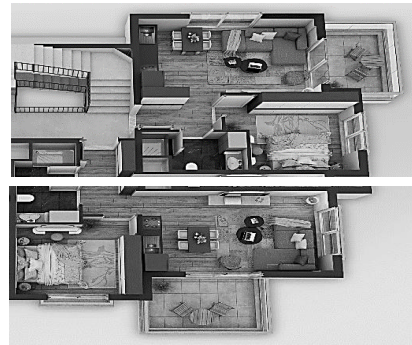
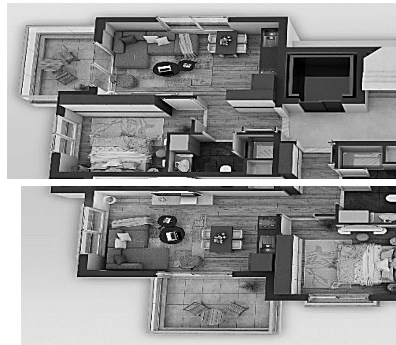
**Features of the apartments:** CNC lacquered doors, Kitchen appliances (oven, hob, extractor) brand "Siemens", automatic roller shutters with electric drive, kitchen furniture.

## A BLOK

THE AIRPORT  
-  
HAVALİMANI

5 Floor	BATI - WEST	KUZUY - NORTH		DOĞU - EAST
		№24 1+1 67 m2 (46,5 m2) 145.000 EUR +	№21 1+1 67 m2 (46,5 m2) 145.000 EUR +	
		GÜNEY - SOUTH		
		№23 1+1 67 m2 (46,5 m2) 150.000 EUR +	№22 1+1 67 m2 (46,5 m2) 150.000 EUR	
4 Floor	BATI - WEST	KUZUY - NORTH		DOĞU - EAST
		№20 1+1 67 m2 (46,5 m2) SOLD *	№17 1+1 67 m2 (46,5 m2) SOLD	
		GÜNEY - SOUTH		
		№19 1+1 67 m2 (46,5 m2) SOLD	№18 1+1 67 m2 (46,5 m2) SOLD	
3 Floor	BATI - WEST	KUZUY - NORTH		DOĞU - EAST
		№16 1+1 67 m2 (46,5 m2) SOLD	№13 1+1 67 m2 (46,5 m2) SOLD *	
		GÜNEY - SOUTH		
		№15 1+1 67 m2 (46,5 m2) SOLD	№14 1+1 67 m2 (46,5 m2) SOLD	
2 Floor	BATI - WEST	KUZUY - NORTH		DOĞU - EAST
		№12 1+1 67 m2 (46,5 m2) 145.000 EUR z	№9 1+1 67 m2 (46,5 m2) SOLD	
		GÜNEY - SOUTH		
		№11 1+1 67 m2 (46,5 m2) SOLD	№10 1+1 67 m2 (46,5 m2) SOLD *	
1 Floor	BATI - WEST	KUZUY - NORTH		DOĞU - EAST
		№8 1+1 67 m2 (46,5 m2) SOLD	№5 1+1 67 m2 (46,5 m2) SOLD	
		GÜNEY - SOUTH		
		№7 1+1 67 m2 (46,5 m2) SOLD *	№6 1+1 67 m2 (46,5 m2) SOLD	
ground Floor	BATI - WEST	KUZUY - NORTH		DOĞU - EAST
		№4 1+1 67 m2 (46,5 m2) SOLD	№1 1+1 67 m2 (46,5 m2) SOLD	
		GÜNEY - SOUTH		
		№3 1+1 67 m2 (46,5 m2) SOLD	№2 1+1 67 m2 (46,5 m2) SOLD	

BATI - WEST



DOĞU - EAST

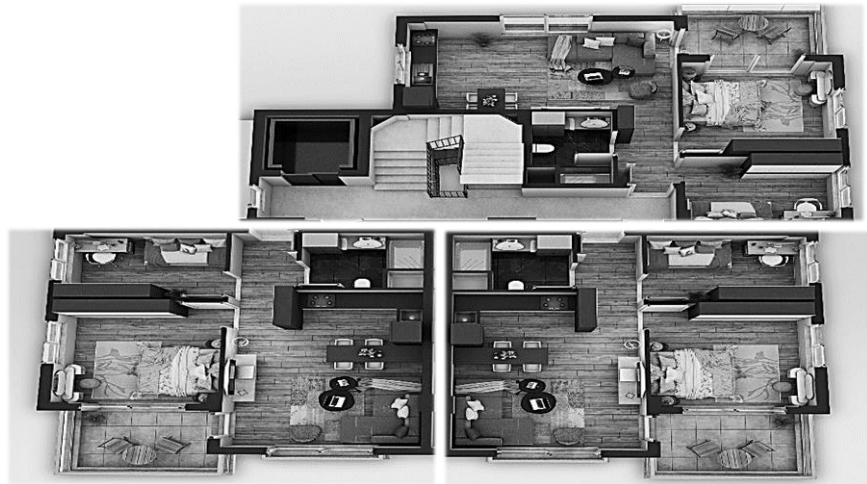
GÜNEY - SOUTH

DENİZ - SEA

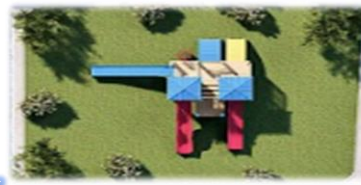
# B BLOK

HAVALIMANI - THE AIRPORT

5 FLOOR	BATI - WEST	KUZUY - NORTH		DOĞU - EAST
		№16 2+1 94m2 (58,5m2) SOLD	№17 2+1 94m2 (58,5m2) SOLD	
4 FLOOR	BATI - WEST	KUZUY - NORTH		DOĞU - EAST
		№15 2+1 94m2 (58,5m2) SOLD	№14 2+1 94m2 (58,5m2) SOLD	
3 FLOOR	BATI - WEST	KUZUY - NORTH		DOĞU - EAST
		№12 2+1 94m2 (58,5m2) 180.000 EUR +	№11 2+1 94m2 (58,5m2) 180.000 EUR +	
2 FLOOR	BATI - WEST	KUZUY - NORTH		DOĞU - EAST
		№9 2+1 94m2 (58,5m2) SOLD	№8 2+1 94m2 (58,5m2) SOLD	
1 FLOOR	BATI - WEST	KUZUY - NORTH		DOĞU - EAST
		№6 2+1 94m2 (58,5m2) SOLD	№5 2+1 94m2 (58,5m2) SOLD	
GROUND FLOOR	BATI - WEST	KUZUY - NORTH		DOĞU - EAST
		№3 2+1 94m2 (58,5m2) SOLD	№2 2+1 94m2 (58,5m2) SOLD	



GÜNEY - SOUTH



DENİZ - SEA

